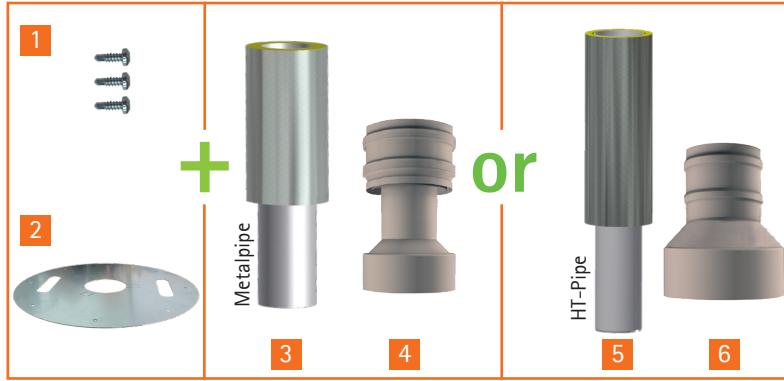


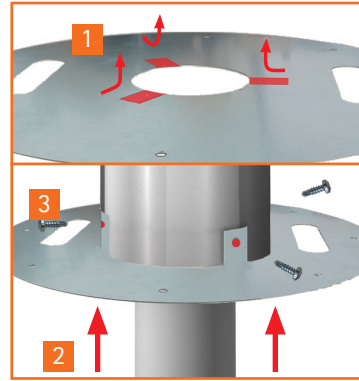
The delivered components must be checked for completeness, correct type and damage.

parts overview/ scope of delivery



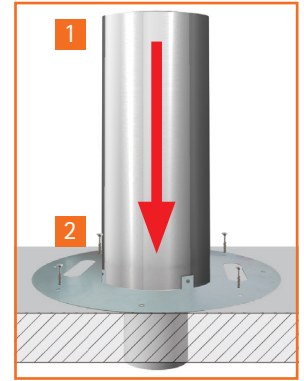
- 1. Screw-set
- 2. Screwflange
- 3. Standpipe ventilation type SRL
- 4. Roof hoodhead type FDL-K
- 5. Standpipe dirtwater SRS
- 6. Roof hoodhead type FDS-K

A.1 pre-assembly



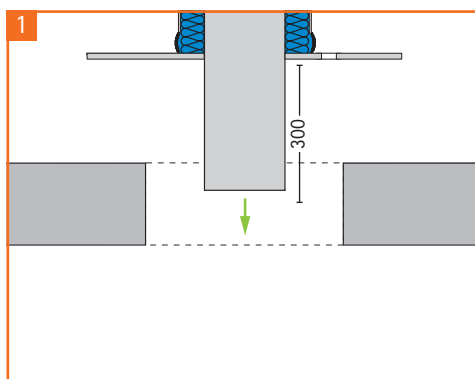
- 1. Bending up the lugs on the flange 90°.
- 2. Slide the flange over the inner pipe.
- 3. Attach the flange flush, fix it with selfdrilling screws through the pre-punched holes.

A.2 standpipe

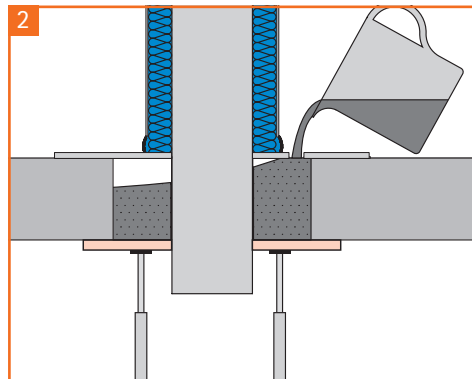


- 1. Push the standpipe from above into the ceilingopening.
- 2. Screw the standpipe from above.

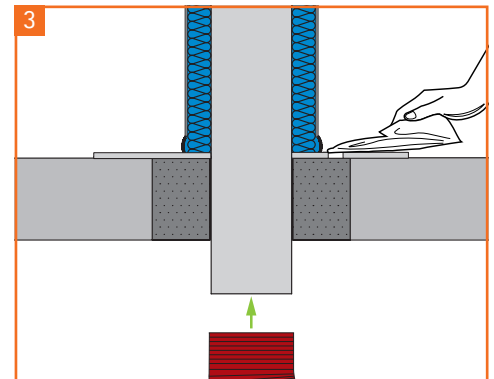
B installation in case of non-existent connectionline



- 1. Place the flange of the verticalpipe on the raw ceiling. Connection length 300 mm (see Step A.2)

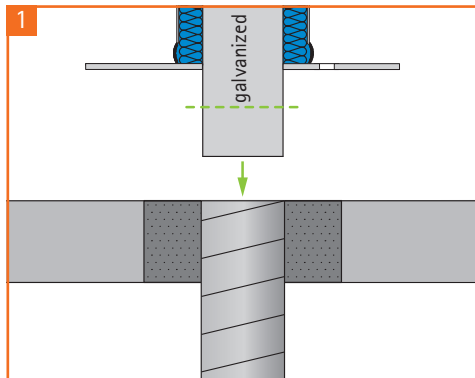


- 2. Casing the ceilingbreakthrough from below if needed and filling the openings in the flange with casting material.

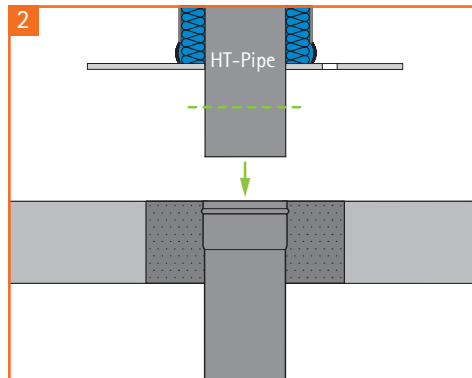


- 3. Remove excess mortar.

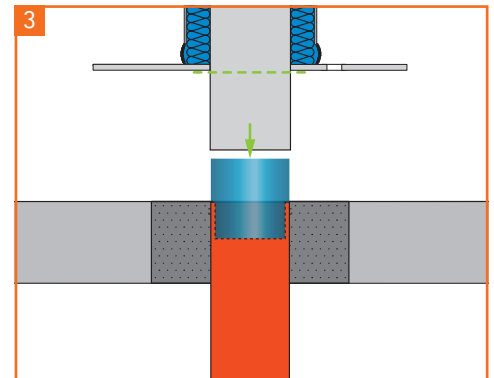
C connectionline flush with the upper edge of the ceilingslab



- 1. Ventilationsline: metal-pipe  
Cut the passage-pipe accordingly and insert it into the existing spiral duct.



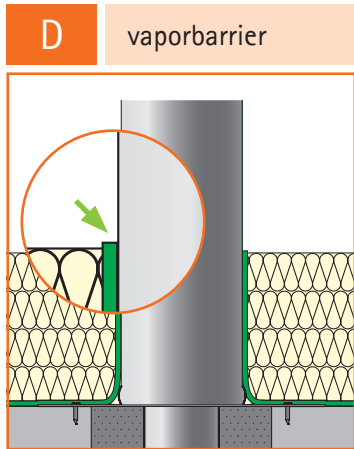
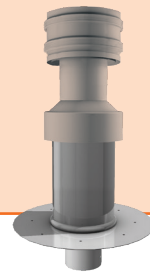
- 2. Ductpipe: plastic-pipe  
Connectionline HT-Pipe: shorten the HT-pipe accordingly and insert it into the connectingline.



- 3. Connectingline: SML-Pipe  
Cut the THT-pipe flush with the flange.  
Reducer RD apply sealant and slide onto the passage-pipe (HT-Pipe).  
Seal the transition reducer RD/SML-pipe.

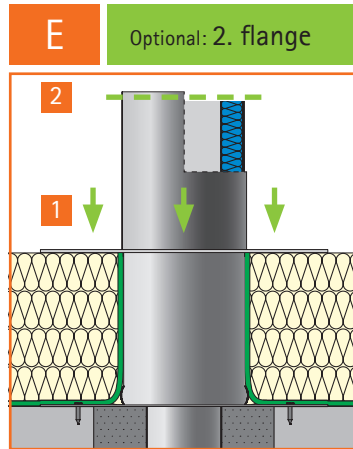
# Flatroof Type FDI (Ventilation) DN 100–250

# Flatroof Type FDS (Wastewater) DN 100–160

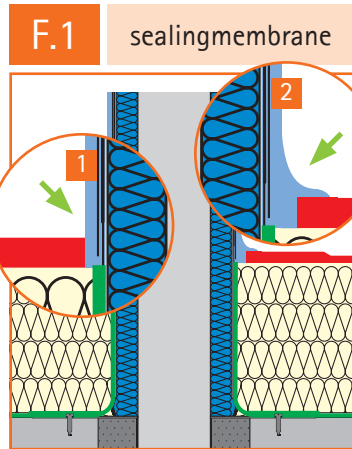


To improve the adhesion, the flange (galvanized) must be provided with an appropriate primer.

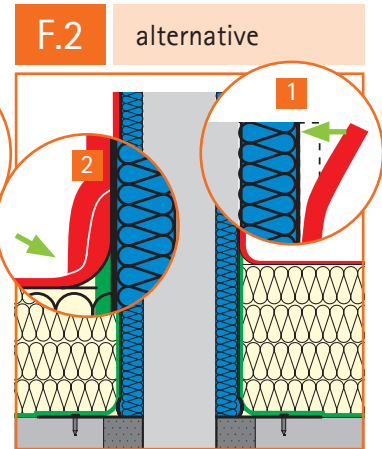
According to the flatroof-guidelines, the vaporbarrier (green) must be installed over the topedge of the Insulation.



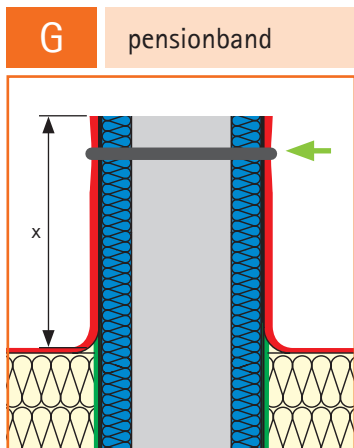
If available:  
 1. Slide flange over standpipe  
 2. Cut the standpipe flush with the topedge



1. Lay and glue the sealingstripe up to 5mm in front of the standpipe  
 2. Seal the transition to the vertical pipe with liquid plastic.

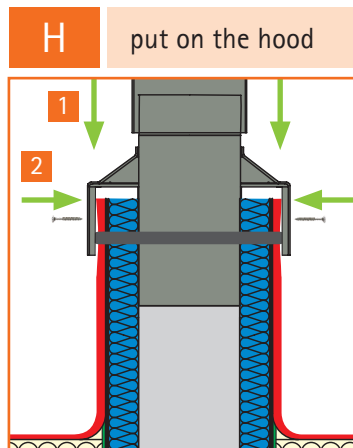


1. Lay the sealingmembrane flush with the topedge of the standpipe  
 2. Seal the transition to the vertical sealingmembrane (e.g. by overlapping)



Attach tensioningstrap to secure the rising sealingmembrane

connectionheight (x) for roofpitch  
 untill 5°: at least 150 mm  
 above 5°: at least 100 mm



1. Place the roofhood type FD onto the standpipe. Drilling on prepunched holes: max. Ø 2,5 mm.  
 2. Screw roofhood with standpipe. (3x Fastening-screw 4x32 mm)



Activated Carbonfilter to prevent unpleasent odors from Ssnitaryrooms.

- must freely accessible
- change the filtercartridge after 2 years at the latest oder when oder nuisance begins
- observe local installation regulations

Replacing the filtercartridge:  
 1. remove hoodhead  
 2. remove cartridgehead  
 3. replace old filtercartridge with new one

## Construction taking into account the different flatroofvariants

