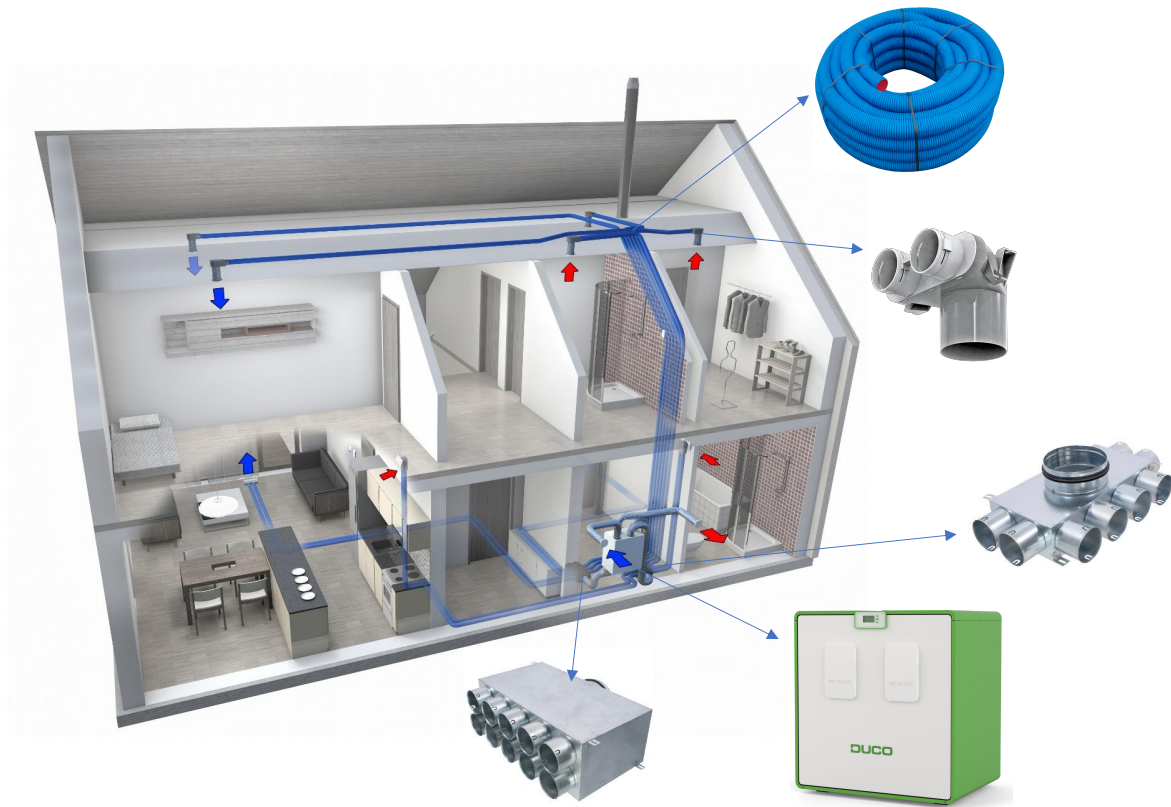


Klimaflex SB Semi-Rigid Ducting System



Benefits of a Semi-Rigid Manifold Ducting System

A semi-rigid manifold ducting system offers numerous advantages that make it a preferred choice for modern ventilation projects:

Fast and Simple Installation

Streamlined design significantly reduces installation time and labour costs.

Flexible and Adaptable

Easily tailored to suit different building types and installation requirements.

Hygienic Airflow

Built-in anti-static, anti-bacterial, and anti-fungal properties help maintain clean, healthy air.

Customizable Pipe Lengths

Ducting can be easily cut or adjusted on-site to meet exact project specifications.

Low Maintenance

Smooth internal surfaces allow for simple and effective cleaning over time.

Minimized Pressure Loss

Optimized design ensures efficient airflow with minimal pressure drop.

No Cross-Talk Between Rooms

Prevents noise transmission through ducting for enhanced acoustic comfort.

Even Air Distribution

Ensures balanced airflow throughout all rooms, improving system performance.

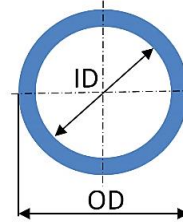
Cost-Effective

Offers lower total acquisition and installation costs compared to traditional rigid or flexible ducting systems.

Technical Sheet
KLIMAFLEX SB DN 75

Description and use:

- KLIMAFLEX SB flexible plastic duct is designed for air distribution and recuperation systems. The ends of the rolls are fitted with caps to prevent dirt from entering the ducts.



Material:

- The outer** profiled wall is made from primary PE-HD.
- The inner** smooth wall is made from primary PE-LD with the addition of anti-fungal and anti-bacterial additives, effective biocides 2-butyl-1,2-benzothiazol-3(2H)-one, CAS 4299-07-4 and thiabendazole (ISO), CAS 148-79-8.

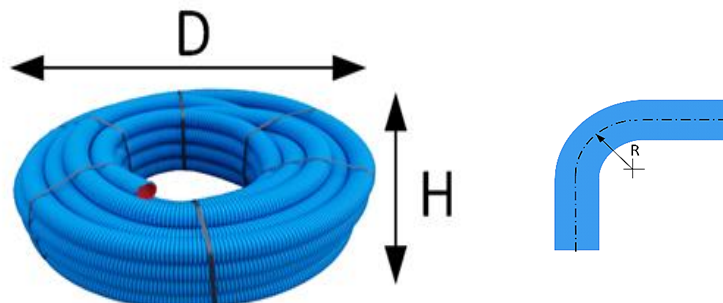
Legislation:

- The product is certified on the basis of government regulation No. 163/2002 Sb., as amended, by Authorised person No. 224.
- The input raw materials do not contain dangerous substances in accordance with regulation (EC) No. 1907/2006 (REACH) and comply with Regulation 2011/65/EU (RoHS).

Properties:

Quantity	Value	Unit	Comment
Outer diameter (OD)	75 (+0,8)	mm	OD 75
Inner diameter (ID)	62(- 0,5)	mm	ID 62
Roll length (L)	50 ± 0,5	m	
Weight *	300	g/m	
Bending radius	0,29	m	ČSN EN 17192
Reaction to fire class	E	/	ČSN EN 13501-1
Ring stiffness	10	kN/m ²	ČSN EN ISO 9969
Resistance to external pressure min.	200	N	ČSN EN 17192, 3%,200mm,2mm/min
Evaluation of the action of microorganism	A / B / C	/	ČSN EN ISO 846
Air tightness class	D, ATC 2	m ³ · s ⁻¹ · m ⁻²	ČSN EN 17192
Operating pressure range	-500/+500	Pa	ČSN EN 17192
Mechanical connection box	MC3	/	Sealing ring UVB-75, sealing tape
Mechanical connection connecting piece	MC2	/	Sealing ring UV-75
Installation / handling temperature	-5/+50	°C	
Operating temperature	-20/+50	°C	ČSN EN 17192, STL-20 to STH +50
Antistatic properties	1,0.10 ¹⁴	Ω	ČSN IEC 93
Packaging dimensions *	1.145 x 0.385	m	D x H see picture
Warranty	See business terms		

*informational value



Pressure loss:

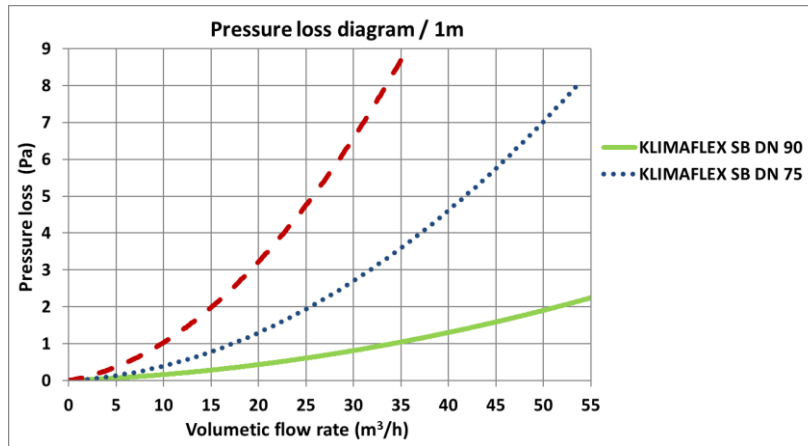





Table: Volumetric flow rate/air flow velocity / number of ducts

Volumetric flow rate (m ³ /h) DN 75			
Number of ducts	Flow velocity		
	2 (m/s)	2,5 (m/s)	3 (m/s)
	21,7	27,2	32,6
	43,4	54,4	65,2
	65,1	81,6	97,8

Manufacturing quality:

- Manufacture is certified according to ČSN EN ISO 9001/2016.
- Quality control is monitored according to internal document KP 12/17.

Identification:

- *identification of the manufacturer *product code * date of manufacture *quantity (m) in packaging
*Information may be given on the caps on a label, by lettering on the tube, or a combination of both methods.

Colour:

- Outer wall: blue
- Inner wall: white.

Storage:

- We recommend storage in a horizontal position up to a height of max. 2.8 m, for max. 3 months.
- Storage temperature -40/+60 (°C).
- Must be protected from direct sunlight.
- Prevent any mechanical damage when handling the ducts. Check the end cap on both ends of the ducts, it must not fall out during handling.
- Dimensions of the standard packaging see picture.



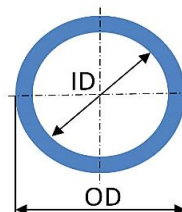
Recommendations:

- Recommended air velocity up to 3m/s.
- Distance between duct fixation elements max. 1m.
- Just before fitting the ducts, remove the end caps. All the free ends of the ducts must be protected from dust or other contamination during installation.

Technical Sheet KLIMAFLEX SB DN 90

Description and use:

- KLIMAFLEX SB flexible plastic duct is designed for air distribution and recuperation systems. The ends of the rolls are fitted with caps to prevent dirt from entering the ducts.



Material:

- The outer** profiled wall is made from primary PE-HD.
- The inner** smooth wall is made from primary PE-LD with the addition of anti-fungal and anti-bacterial additives effective biocides 2-butyl-1,2-benzothiazol-3(2H)-one, CAS 4299-07-4 and thiabendazole (ISO), CAS 148-79-8.

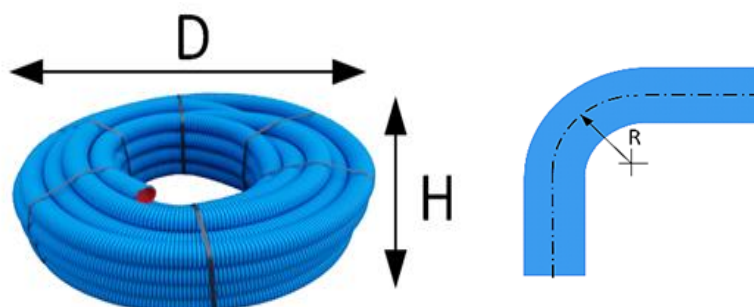
Legislation:

- The product is certified on the basis of government regulation No. 163/2002 Sb., as amended, by Authorised person No. 224.
- The input raw materials do not contain dangerous substances in accordance with regulation (EC) No. 1907/2006 (REACH) and comply with Regulation 2011/65/EU (RoHS).

Properties:

Quantity	Value	Unit	Comment
Outer diameter (OD)	90 +1,4/-1,0	mm	OD 90
Inner diameter (ID)	74,5 – 76,5	mm	ID 75
Roll length (L)	50 ± 0,5	m	
Weight *	400	g/m	
Bending radius	0,33	m	ČSN EN 17192
Reaction to fire class	E	/	ČSN EN 13501-1
Ring stiffness	10	kN/m ²	ČSN EN ISO 9969
Resistance to external pressure min.	200	N	ČSN EN 17192, 3%,200 mm,2mm/min
Evaluation of the action of microorganism	A / B/ C	/	ČSN EN ISO 846
Air tightness class	D, ATC 2	m ³ · s ⁻¹ · m ⁻²	ČSN EN 17192
Operating pressure range	-500/+500	Pa	ČSN EN 17192
Mechanical connection box	MC3	/	Sealing ring UVB-90, sealing tape
Mechanical connection connecting piece	MC2	/	Sealing ring UV-90
Installation / handling temperature	-5/+50	°C	
Operating temperature	-20/+50	°C	ČSN EN 17192, STL-20 to STH +50
Antistatic properties	1,0.10 ¹⁴	Ω	ČSN IEC 93
Packaging dimensions *	1.33 x 0.4	m	D x H see picture
Warranty	See business terms		

*informational value



Pressure loss:

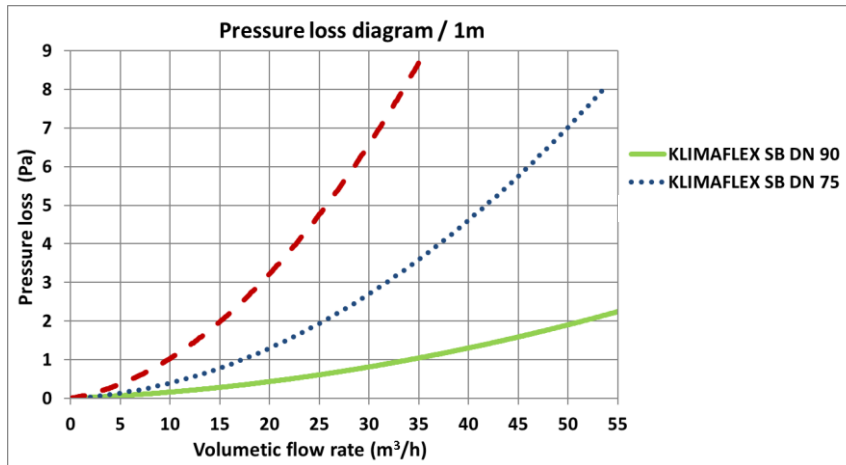





Table: Volumetric flow rate/air flow velocity / number of ducts

Volumetric flow rate (m ³ /h) DN 90			
Number of ducts	Flow velocity		
	2 (m/s)	2,5 (m/s)	3 (m/s)
	31,8	39,8	47,7
	63,6	79,6	95,4
	95,4	119,4	143,1

Manufacturing quality:

- Manufacture is certified according to ČSN EN ISO 9001/2016.
- Quality control is monitored according to internal document KP 12/17.

Identification:

- *identification of the manufacturer *product code * date of manufacture *quantity (m) in packaging
*Information may be given on the caps on a label, by lettering on the tube, or a combination of both methods.

Colour:

- Outer wall: blue.
- Inner wall: white.

Storage:

- We recommend storage in a horizontal position up to a height of max. 2.7 m, for max. 3 months.
- Storage temperature -40/+60 (°C).
- Must be protected from direct sunlight.
- Prevent any mechanical damage when handling the ducts. Check the end cap on both ends of the ducts, it must not fall out during handling.
- Dimensions of the standard packaging see picture.



Recommendations:

- Recommended air velocity up to 3m/s.
- Distance between duct fixation elements max. 1m.
- Just before fitting the ducts, remove the end caps. All the free ends of the ducts must be protected from dust or other contamination during installation.

ACCESSORIES 75

KLO-2x75/P-125-OC

KLO-3x75/P-125-OC

Pass-through flat ceiling / Wall box for DN 125 air valve



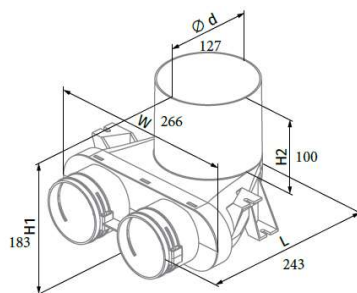
Material: galvanised steel

Supplied components:

- DN 125
- Safeguards against movement of the semi-rigid radial ducting

KLO-2x75K/125/RPZ 01 PVC

Pass-through ceiling / Wall box for DN 125 air valve

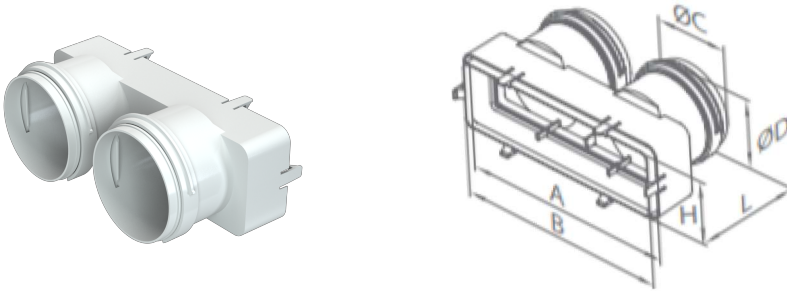


Air flow [m ³ /h]	Quantity of connected air ducts	Air supply. Pressure drop [Pa]	Air exhaust. Pressure drop [Pa]
30	1	3.2	4.0
60	2	3.9	5.0

⚠ We do not guarantee that our products will be compatible with another company's products!

MH 75/204x60

Pass-through flat ceiling / Wall box for DN 125 air valve



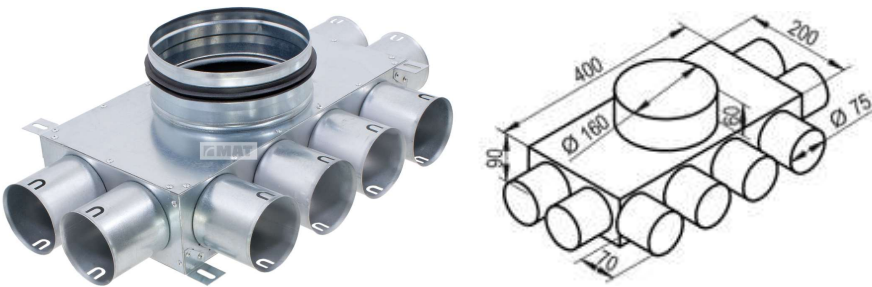
Material: PVC

Supplied components:

Model	A (mm)	B (mm)	H (mm)	L (mm)	ØC (mm)	ØD (mm)
MH 75/204x60	217	204	60	98	75	79

KL-8x75/160-OC

Flat distribution box



Material: galvanised steel

Supplied components:

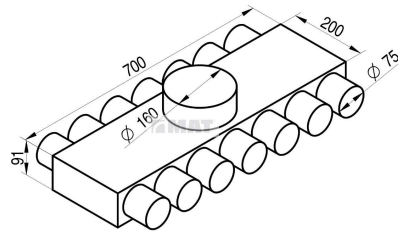
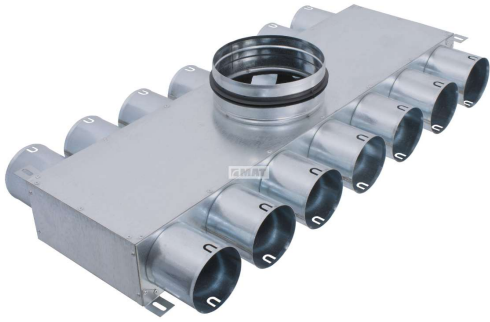
- DN 160 seal O -ring
- Installation fixtures
- Safeguards against movement of the semi-rigid radial ducting
- 8 DN 75 sealing rings
- Interior box insulation

Airflow speed m/s	2	2,5	3
Volume m ³ /h (8x75)	168	208	256

⚠ We do not guarantee that our products will be compatible with another company's products!

KL-14x75/160-OC

Direct distribution box



Material: galvanised steel

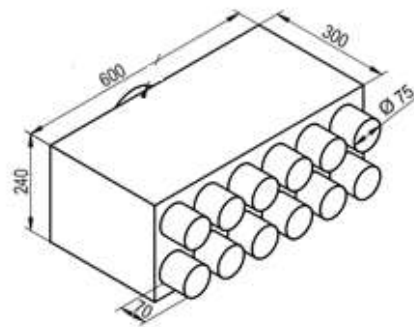
Supplied components:

- DN 160 seal O-ring
- Installation fixtures
- Safeguards against movement of the semi-rigid radial ducting
- 12 DN 75 sealing rings
- Interior box insulation
- Inspection hatch

Airflow speed m/s	2	2,5	3
Volume m ³ /h (14x75)	294	364	448

RT2R-12x75/200-OC

Direct distribution box



Material: galvanised steel

Supplied components:

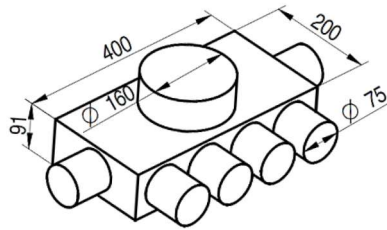
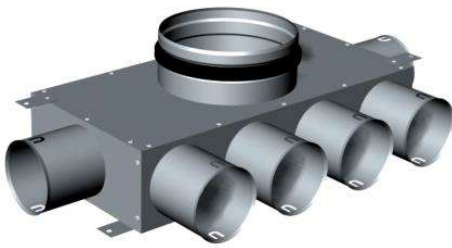
- DN 200seal O-ring
- Installation fixtures
- Safeguards against movement of the semi-rigid radial ducting
- 12 DN 75 sealing rings
- Interior box insulation
- Inspection hatch

Airflow speed m/s	2	2,5	3
Volume m ³ /h (12x75)	252	312	384

⚠ We do not guarantee that our products will be compatible with another company's products!

KL-6x75/160-OC Non-Insulated

Direct distribution box



Material: galvanised steel

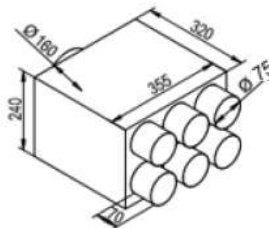
Supplied components:

- DN 160 seal O-ring
- Installation fixtures
- Safeguards against movement of the semi-rigid radial ducting
- 6 DN 75 sealing rings
- INon-Insulated
- Inspection hatch

Air-flow speed (m/s)	2	2,5	3
Volume (m ³ /h)	126	156	192

RT2R-6x75/160-OC

Direct distribution box



Material: galvanised steel

Supplied components:

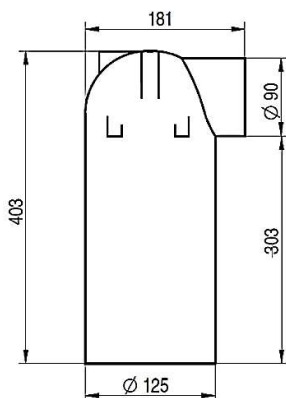
- DN 160 seal O-ring
- Installation fixtures
- Safeguards against movement of the semi-rigid radial ducting
- 6 DN 75 sealing rings

⚠ We do not guarantee that our products will be compatible with another company's products!

ACCESSORIES 90

KLO-1x90/125 Long

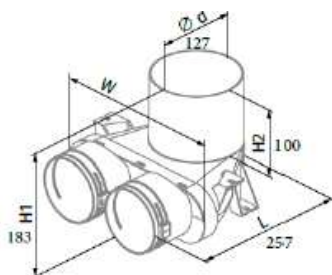
Pass-through ceiling / Wall box for DN 125 air valve



Air-flow speed (m/s)	2	2,5	3
Volume (m ³ /h)	32	40	48

KLO-2x90/RZP Plastic

Pass-through ceiling / Wall box for DN 125 air valve



Air flow [m ³ /h]	Quantity of connected air ducts	Air supply. Pressure drop [Pa]	Air exhaust. Pressure drop [Pa]
45	1	6.3	7.0
90	2	7.8	8.8

⚠ We do not guarantee that our products will be compatible with another company's products!

KLO-2x90/P-125-OC

Pass-through flat ceiling / Wall box for DN 125 air valve



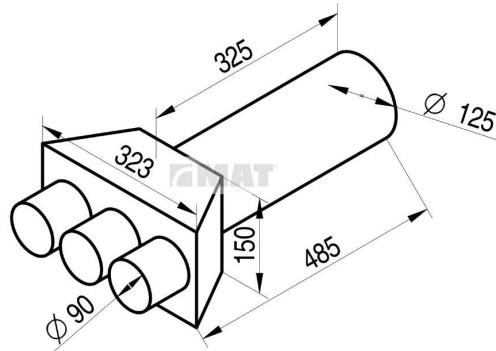
Material: PP

Supplied components:

- DN 125
- Installation fixtures
- Safeguards against movement of the semi-rigid radial ducting

KLO-3x90/P-125-OC

Pass-through flat ceiling / Wall box for DN 125 air valve



Material: galvanised steel

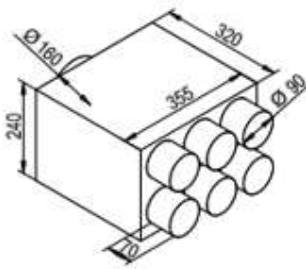
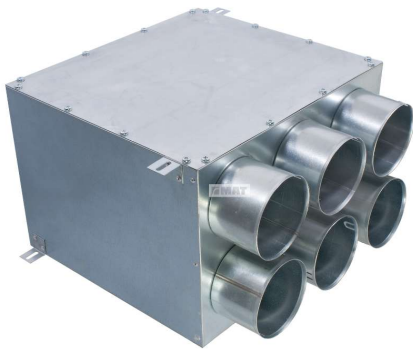
Supplied components:

- DN 125 plug
- Installation fixtures
- Safeguards against movement of the semi-rigid radial ducting
- 4 DN 90 sealing rings

Air-flow speed (m/s)	2	2,5	3
Volume (m ³ /h)	96	120	144

RT2R-6x90/160-OC

Direct distribution box



Material: galvanised steel

Supplied components:

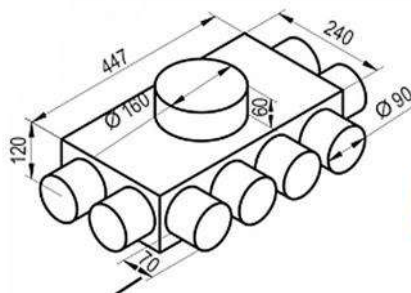
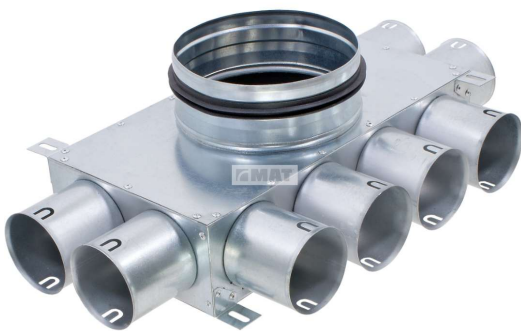
- DN 160 seal O-ring
- Installation fixtures
- Safeguards against movement of the semi-rigid radial ducting
- 6 DN 90 sealing rings
- Interior box insulation
- Inspection hatch

Airflow speed m/s	2	2,5	3
Volume m ³ /h (6x90)	192	240	288

KLQ-8x90/160-OC

Flat direct distribution box

Flat direct distribution box



Material: galvanised steel

Supplied components:

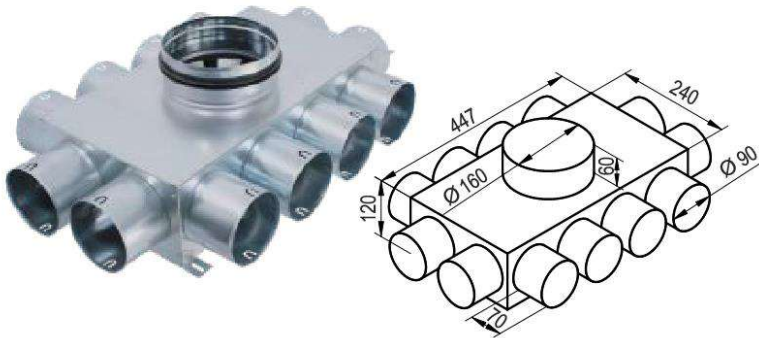
- DN 160 seal O-ring
- Installation fixtures
- Safeguards against movement of the semi-rigid radial ducting
- 8 DN 90 sealing rings
- Interior box insulation
- Inspection hatch

Airflow speed m/s	2	2,5	3
Volume m ³ /h (8x90)	168	208	256

⚠ We do not guarantee that our products will be compatible with another company's products!

KLQ-12x90/160-OC

Flat distribution box



Material: galvanised steel

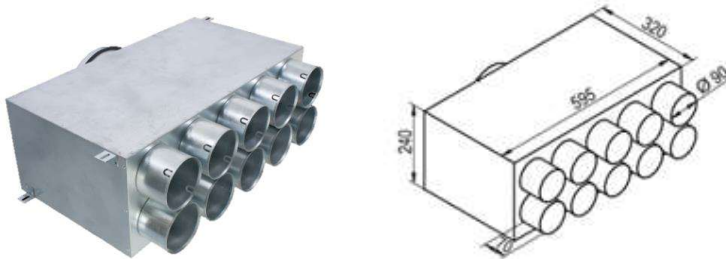
Supplied components:

- DN 160 seal O-ring
- Installation fixtures
- Safeguards against movement of the semi-rigid radial ducting
- 12 DN 90 sealing rings
- Interior box insulation

Airflow speed m/s	2	2,5	3
Volume m ³ /h (12x90)	384	480	576

RT2R-10x90/200-OC

Direct distribution box



Material: galvanised steel

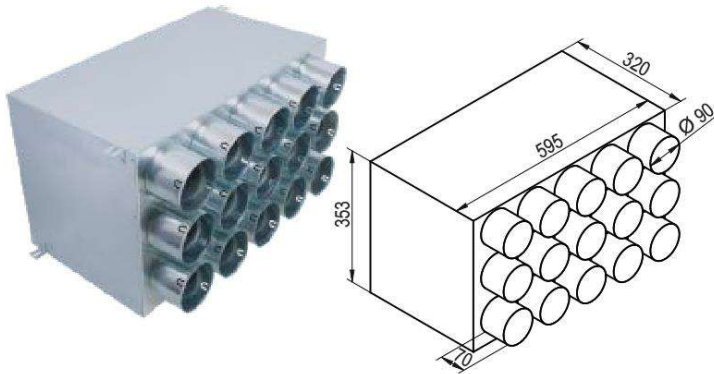
Supplied components:

- DN 200 seal O-ring
- Installation fixtures
- Safeguards against movement of the semi-rigid radial ducting
- 10 DN 90 sealing rings
- Interior box insulation
- Inspection hatch

Airflow speed m/s	2	2,5	3
Volume m ³ /h (10x90)	320	400	480

RT3R-15x90/200-OC

Direct distribution box



Material: galvanised steel

Supplied components:

- DN 200 seal O-ring
- Installation fixtures
- Safeguards against movement of the semi-rigid radial ducting
- 15 DN 90 sealing rings
- Interior box insulation
- Inspection hatch

Airflow speed m/s	2	2,5	3
Volume m ³ /h (15x90)	480	600	720

ACCESSORIES KLIMAFLEX SB

End caps, connecting sleeves, sealing rings, self-adhesive tape, shrink-seal connector

End cap for semi-rigid radial ducting



Material: PE-HD

For pipe dimensions DN	63	75	90
Order code	ZA-63	ZA-75	ZA-90

90 Degree Elbow Bend



Sizes

RB75

RB90

End cap for box outlets



Sizes
RFP75
RFP90

Sealing rings for Boxes



Sizes
RL75
RL90

Connectors



Sizes
RM75
RM90

Reducers



RS 125-100 PVC
RS 150-125 PVC
RS 200-150 PVC

Reducers



R 125M-160F Metal
R 150M-160M Metal
R 150M-160F Metal
R 150M-200F Metal
R 180M-200F Metal

Reducers



R 125F-075F Metal
R 125F-090F Metal

Other Ducting and Accessories

Supply & Extract Valves

OPF 125/150 Extract Valve



OPT 125 Valve Supply



VPD 125 Valves



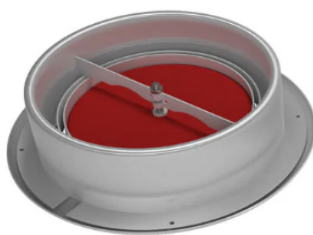
DucoVent Premium Trim 125



Fire Rated Extract



Fire Rated Supply



EG-WHM 100 AC Acoustic Wall Vent

WALL VENT

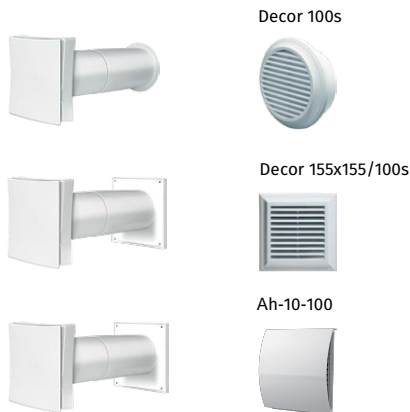
Features

- For the mounting in external wall in the room
 - Provides steady fresh air intake
 - Closed 47db - Open 42db
 - Manual adjustment of effective cross section Easy
 - maintenance
 - Equivalent area 2,859mm²
- Note: G3 filter must be removed to use the acoustic version



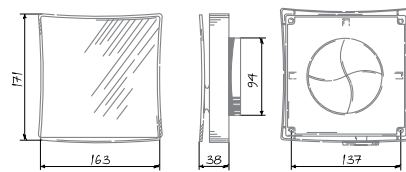
Modifications

Decor – with external white grilles.
Decor – with external colour grilles available upon request.



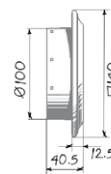
Overall dimensions [mm] and mounting

Internal grille

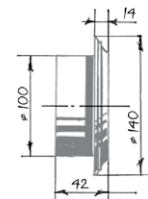


External grille (plastic)

Square external grille



Round external grille



Technical data

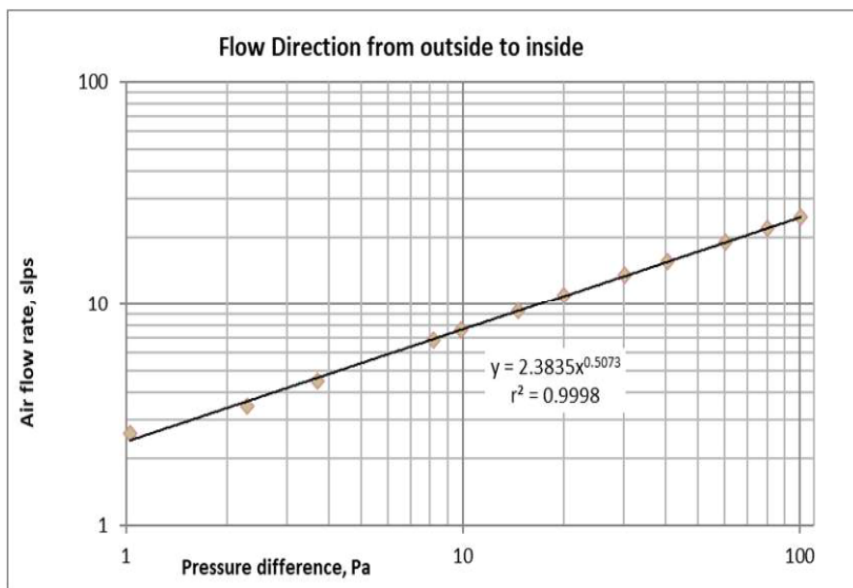
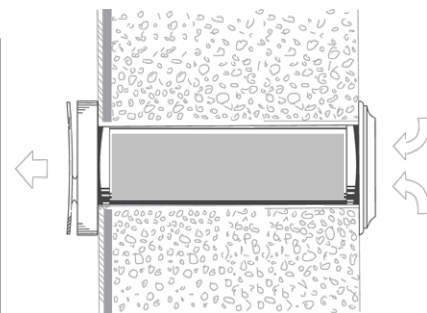


Figure 5 Measured air flow and pressure data for air flow from outside to inside corrected to STP.



WHM

WALL VENT

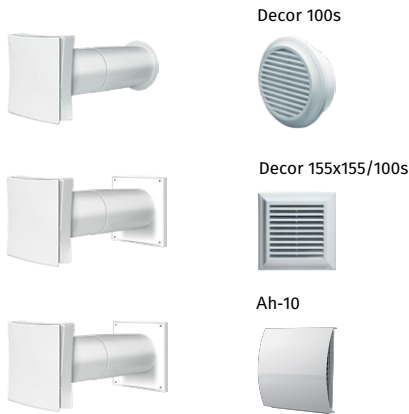
Features

- For the mounting in external wall in the room
- Provides steady fresh air intake
- Supplied with a dust G3 filter
- Manual adjustment of effective cross section Easy maintenance
- Equivalent area 3580 mm²



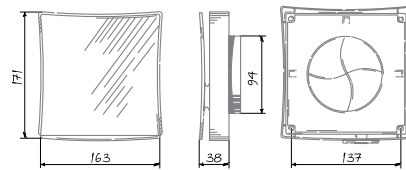
Modifications

Decor – with external white grilles.
Decor – with external colour grilles available upon request.



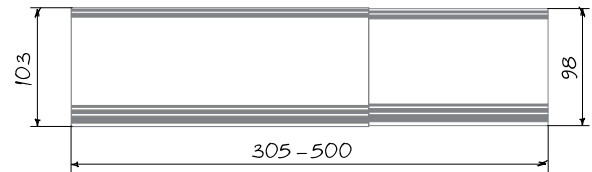
Overall dimensions [mm] and mounting

Internal grille

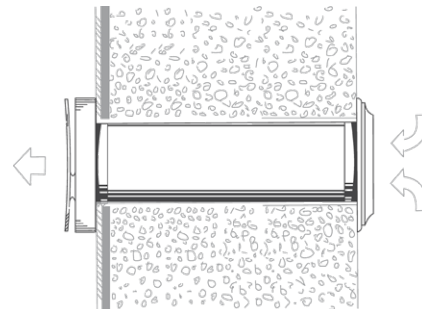
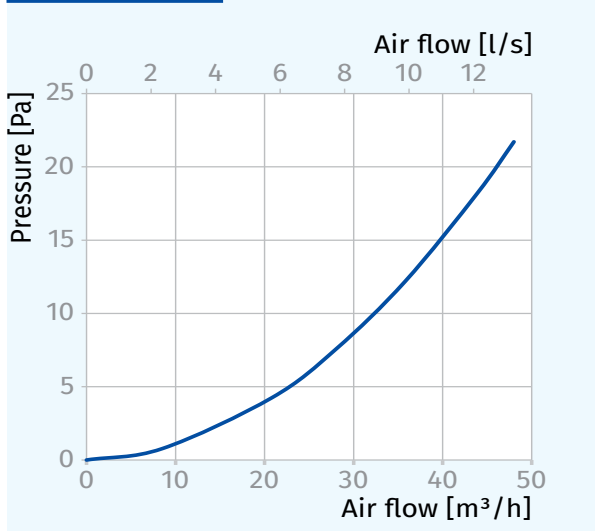


External grille (plastic)

Telescopic duct (sold separately)



Technical data



Acoustic Wall Vents

Duco Silenzio



→ Ventilation- and sound reduction performance

Type	Airflow (Q) in l/s/m at...			Airflow (Q) in m³/h/m at...			Equivalent area at 1 Pa in mm²/m	Geometrical Free Area in mm²/m	Sound absorption $D_{n,e}, W(C;C_{tr})'$ in dB	
	1 Pa	2 Pa	10 Pa	1 Pa	2 Pa	10 Pa			OPEN position	CLOSED position
Silenzio SR	16,6	16,5	16,4	59,8	59,4	59,1	21060	17600	39 [-1;-4]	50 [-2;-5]
Silenzio SR AK	9,0	10,1	10,3	32,4	36,4	37,1	11478	17600	48 [-1;-4]	61 [-1;-6]
Silenzio Retro SR ** without Duco outside cap	10,7**	15,2	10,1	38,5	54,7	36,4	13616	17600	43 [-1;-3]	64 [-3;-10]
Silenzio Retro SR with Duco outside cap	9,0	12,9	10,1	32,4	46,5	36,4	11453	11500	43 [-1;-3]	64 [-3;-10]

* According to EN ISO 717

** Measured without outside cap. Effective values depend on the outside part.

⚠ We do not guarantee that our products will be compatible with another company's products!

Wall Cowls

Wall Cowl 150mm \emptyset and 200mm \emptyset

Black or White



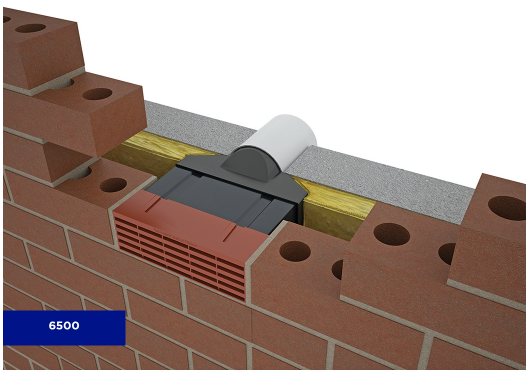
Wall Cowl 100mm, 125mm and 150mm \emptyset White

Different colors available upon request



External Grilles

Adapt-Air 6500



VKC5733



Decor s
Available 100mm, 125mm
colour upon request



Decor 155x155
Available 100mm, 125mm, 150mm
colour upon request



Roof Cowls

Roof Cowl Condron
125/150mm Ø with Adaptor



Roof Cowl Universal
125/150mm Ø with Adaptor



Roof Cowl Slate Grey
125/150mm Ø with Adaptor



Roof Cowl
200mm Ø



Flat Roof Cowls



Versions

160mm

200mm

Flexible Insulated Ducting

Flexible Ducting
Iso250 10m 127/152/203mm Ø



Silencers

Sonoec DST 127/0.5



Flexible Silencer Sonodec
Non-Woven TRD25



160mm Ø
203mm Ø

⚠ We do not guarantee that our products will be compatible with another company's products!

Ducting Accessories

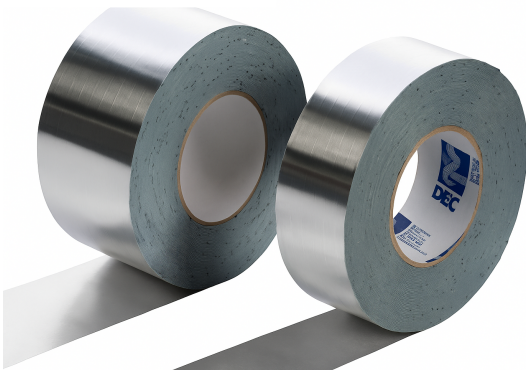
Temporary air sealing tape



ASB7050



Foil Tape 75mm



Duct Sealant



25mm Foil Back insulation



⚠ We do not guarantee that our products will be compatible with another company's products!