

Fire Rated Ceiling Air Valve

Key Features:

- Extract and Supply versions
- 60 minutes Fire Rating
- No maintenance required
- Meets requirements of Approved Document B
- Simple to install



The FIREFLY Fire Rated Ceiling Air Valves are a unique and cost effective fire rated solution where recessed ceiling air valves are to be installed in fire rated ceilings. In a fire situation, the integral intumescent material rapidly expands to seal off the air valve and reinstate the fire resistance rating of the ceiling. This limits the risk of fire and heat spread throughout the building. The Ceiling Air Valves are available in all sizes for both Extract and Supply.



The Fire Rated Ceiling Air Valve is installed as normal with air flow through the air valve unaffected. The product requires no maintenance after installation. The Fire Rated Ceiling Air Valves is suitable for domestic homes, as well as apartments, hotels and other multiple occupancy buildings where fire ratings exist.

Product Dimensions

Extract (Ø)	Supply (Ø)
80 mm	80 mm
100 mm	100 mm
125 mm	125 mm
150 mm	150 mm
200 mm	200 mm



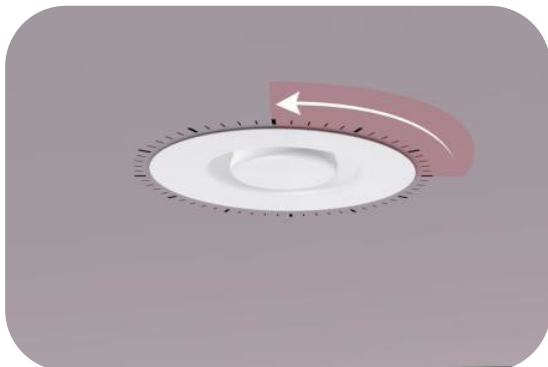
Fitting Instructions



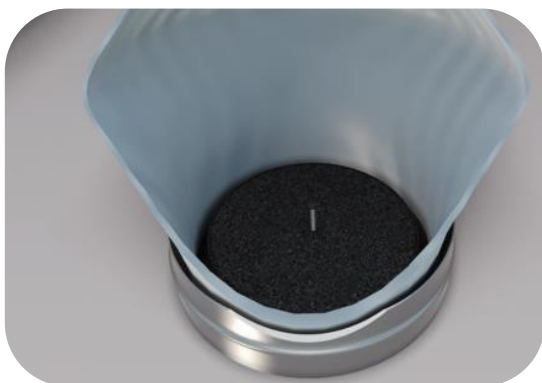
- Cut hole in ceiling to suit the outside diameter of the air valve mounting ring
- Fix the air valve to the ceiling via the screw holes in the valve



- Attach ducting onto the air valve mounting ring



- Fit the body of the valve into the mounting ring with a quarter turn twist
- Set inner cone clearance to provide required air flow rate (max. 12mm)



- Ensure the air valve is fitted snugly within the ceiling with no gaps or voids
- The penetration is then sealed against the spread of fire and the fire rating

Test Data

Report Type	Fire Test Lab	Report Number	Construction	Fire Rating
Fire Test	The Building Test Centre	BTC 18074F	Timber Joist/GTEC Fire Board Floor	60
Fire test	Chiltern Fire	IF10090	Plasterboard	60