

SAVE VSR 300

Heat recovery unit designed for ventilated areas up to approximately 240 m².

SAVE VSR 300 is a double skinned, fully insulated unit with complete control functions. The unit is equipped with a high efficiency variable speed rotating heat exchanger and a moisture transfer function that regulates the rotation speed of the rotor due temperature and moisture transfer back to supply air. Energy efficient fans with EC motors as well as low pressure filters reduces the energy consumptions and gives low SFP factor (Specific Fan Power) and low sound. The built in humidity sensor in extract air can be used for demand control.

All settings and features are available from the SAVE Touch control panel that connects to the side of the unit via the connection board and can be positioned on the wall or on the unit. The panel is a color touch screen with a user friendly interface. The option for connecting one or more external control panels is available. Also control panel has separate user level for authorized installers and service personnel.

The homepage of the control panel shows information such as airflow, temperature, air quality and active functions. You can select between MANUAL and AUTO mode or choose preferred settings from the pre-configured user modes.

SAVE Touch AUTO mode has many functions available that regulate the airflow according to CO₂, presence, humidity, schedule etc. The demand function control gives effective and economical operation to ensure best indoor air quality. Alarm symbols will indicate possible malfunctions and issues direct alerts if anything needs to be rectified.

The unit comes with built-in electric reheater.

The unit is provided with a connection board that has prewired inputs and outputs for easy installation and setup of external sensors as well as for external heaters / coolers.

The unit can be installed in upright position on the floor or horizontally on the ceiling.

A Ceiling mounting kit is available as an accessory.

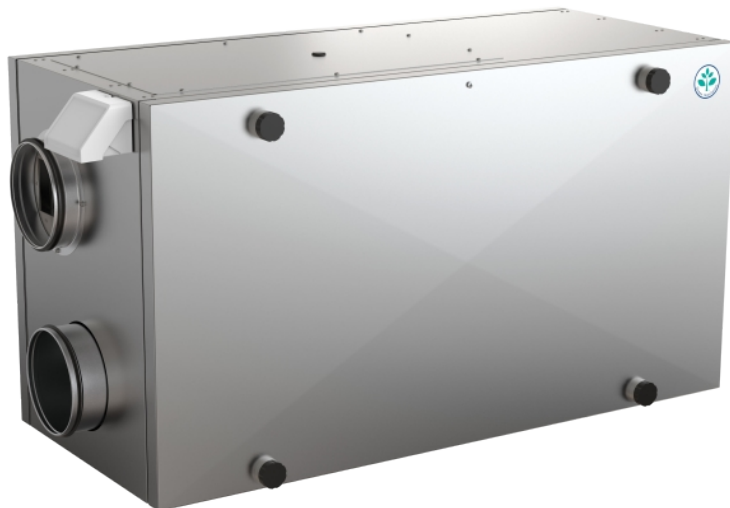
The unit is delivered with low pressure bag filters:

Supply air filter F7/ePM2.5 70%



Extract air filter G3/Coarse 50%

Low pressure bag filter G3/Coarse 60% is available as an accessory for supply air filtering.

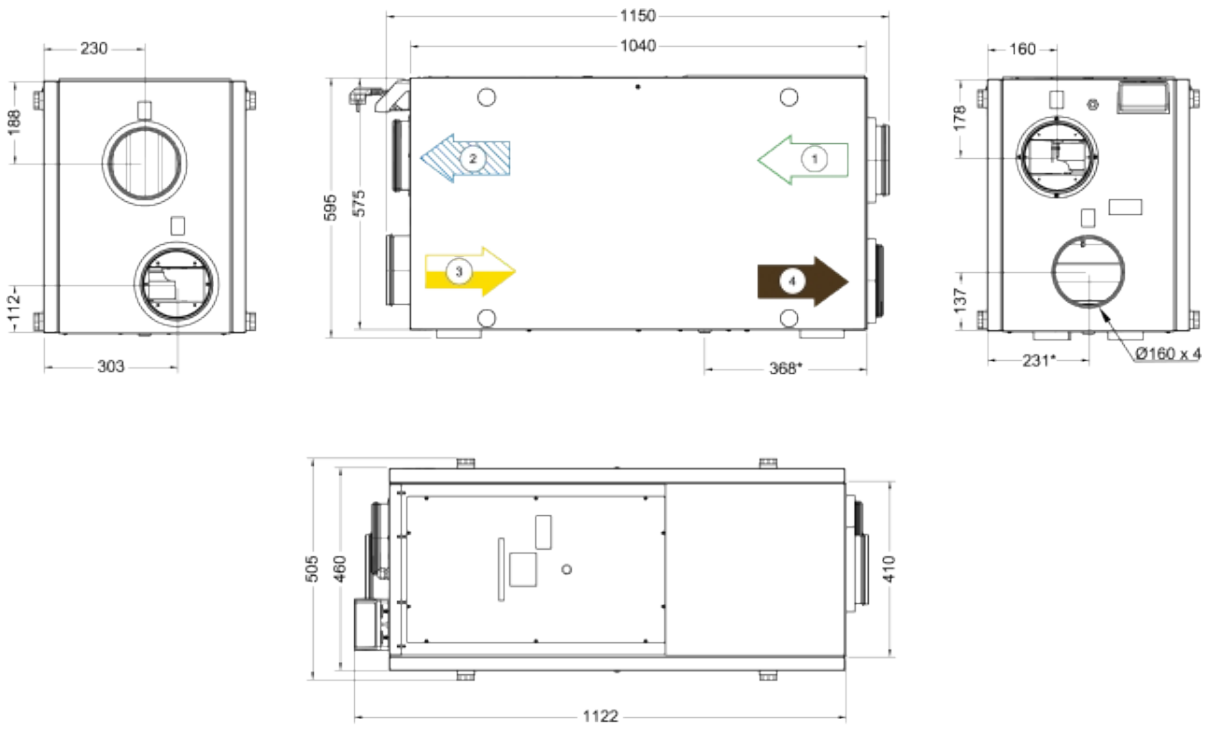
Passive House Institute (PHI) approved filter set (F7/ePM1 60% - M5/ePM10 50%) which is required for Passive House function is available as an accessory.



Technical parameters

Unit	
Voltage	230 V
Frequency	50 Hz
Phase	1 ~
Weight	65 kg
Recommended fuse	10 A
Enclosure class	IP24
Color casing	Galvanized steel
Heat exchanger	
Rotor drive	Variable speed
Exchanger type	Rotating
Heater	
Input power, electrical heating battery	1,67 kW
Heating type	Electric
Supply fan	
Input power (P1)	83 W
Extract fan	
Input power (P1)	83 W
Supply filter	
Filter, supply air	ePM2,5 70%
Extract filter	
Filter, extract air	Coarse 50%
Others	
Mounting type	Horizontal
Supply side	Right
ErP	
Energy class, basic unit	A 
Energy class, basic unit option	A 
ErP ready	ErP 2016/ErP 2018

Dimensions



* Drainage

- 1 Outdoor air
- 2 Supply air
- 3 Extract air
- 4 Exhaust air