

Technical Information



DVLI SUPPLY AIR VALVE

PRODUCT PROPERTIES

Supply air device **DVLI** is a circular disc valve with an aerodynamic shaped throttling device. It can be wall mounted or alternatively ceiling-mounted and has good qualities regarding sound level, air resistance (pressure drop), air flow and self damping.

The design of the valve together with a seal of moltopren prevents the ceiling and walls to get dirty.

Material and surface finish

The device is made of impact-resistant white karbamid and propen with a dirt-resistant surface. The material withstands temperatures up to 100° C and also most chemical substances in small concentrations

The device is supplied in white RAL9002 as standard.

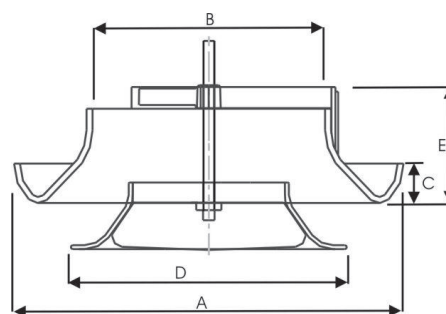
Adjustment

The cone is adjusted out or in by the number of revolutions necessary to provide the orifice opening in mm corresponding to the pressure drop and the desired air flow according to the graph. The pressure drop is controlled by conducting a suitable test probe into the front.

Care

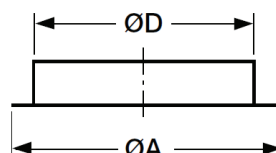
The device can be cleaned with a cloth moistened with a mild synthetic cleaning or washing agent.

DIMENSIONS in mm



DVLI	A	B	C	D	E
125	157	96	20	116	62

DVLZ Galvanized steel sheet mounting frames, are available as an accessory.



SIZE	A	D	Hole size
DVLZ125	152	125	Ø135